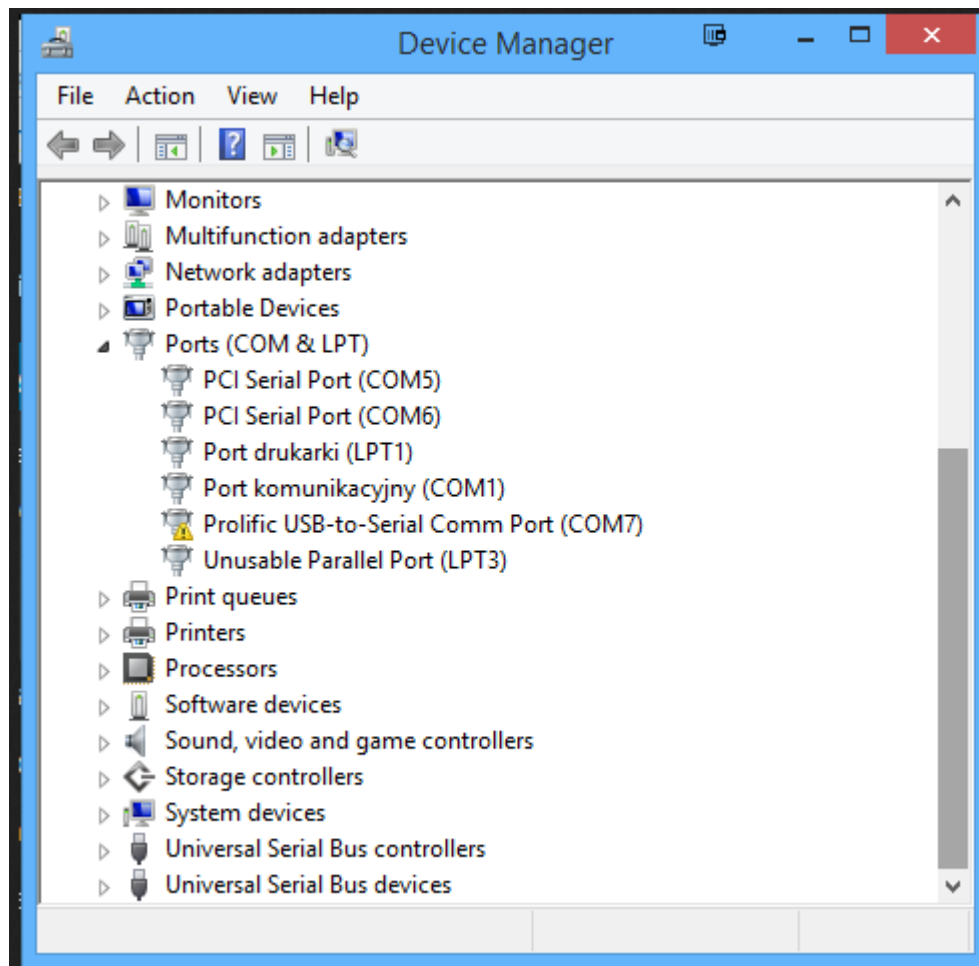


Install VFD LD240 USB to Windows 8.1 & 10

1. Run PL2303_Prolific_GPS_1013_20090319.exe
2. Restart
3. Connect VFD
4. Go to **Device Manager** -> Right click on **Prolific-to-Serial Comm Port** and select **Update Driver Software....**



Install VFD LD240 USB to Windows 8.1 & 10

5. In **Update Driver Software** window chose: **Browse my computer for driver software** -> **Let mi pick from list of devices on my computer**, Select **Prolific USB-to_Serial Comm Port version 3.3.2.105 model [10/27/2008]** from model list and click next.

